



Configuration Instructions: Scanner Only RS232 using Softwedge

Filename: SoftWedge Instructions.doc

Unit Type: RS232 and/or USB COM Port Scanner Date: 13th. September 2010

Metrologic SoftWedge application is software which runs on Windows, which is used with scanners manufactured with RS232 interfaces. RS232 interfaces connect directly to the COM port on the host device (PC), but not to the keyboard connection (PS/2). Softwedge converts the data coming from the COM port (serial data) to emulate as though it was coming from the keyboard (keyboard data). In other words serial port scanners will work with applications such as Excel, notepad, Word, etc., when Metrologic SoftWedge is used.

Download SoftWedge:

Download the program from [here](#) and install the program.

Select SoftWedge Software from the software drop down menu.

Open SoftWedge

After the installation an icon appears in the right corner of the task bar.



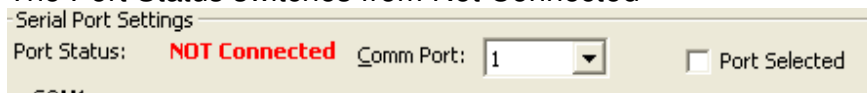
The SoftWedge round icon shows up next to the clock on the bottom right of the PC screen. Double click on the icon and select the correct COM port.

Or go to Start > Programs>Metrologic SoftWedge> Softwedge.

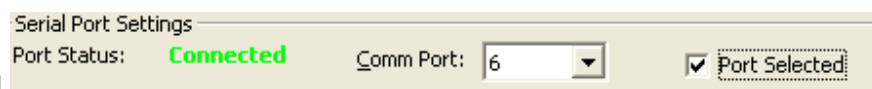
Select the correct COM Port, see therefore the Device Manager.

Mark "Port Selected".

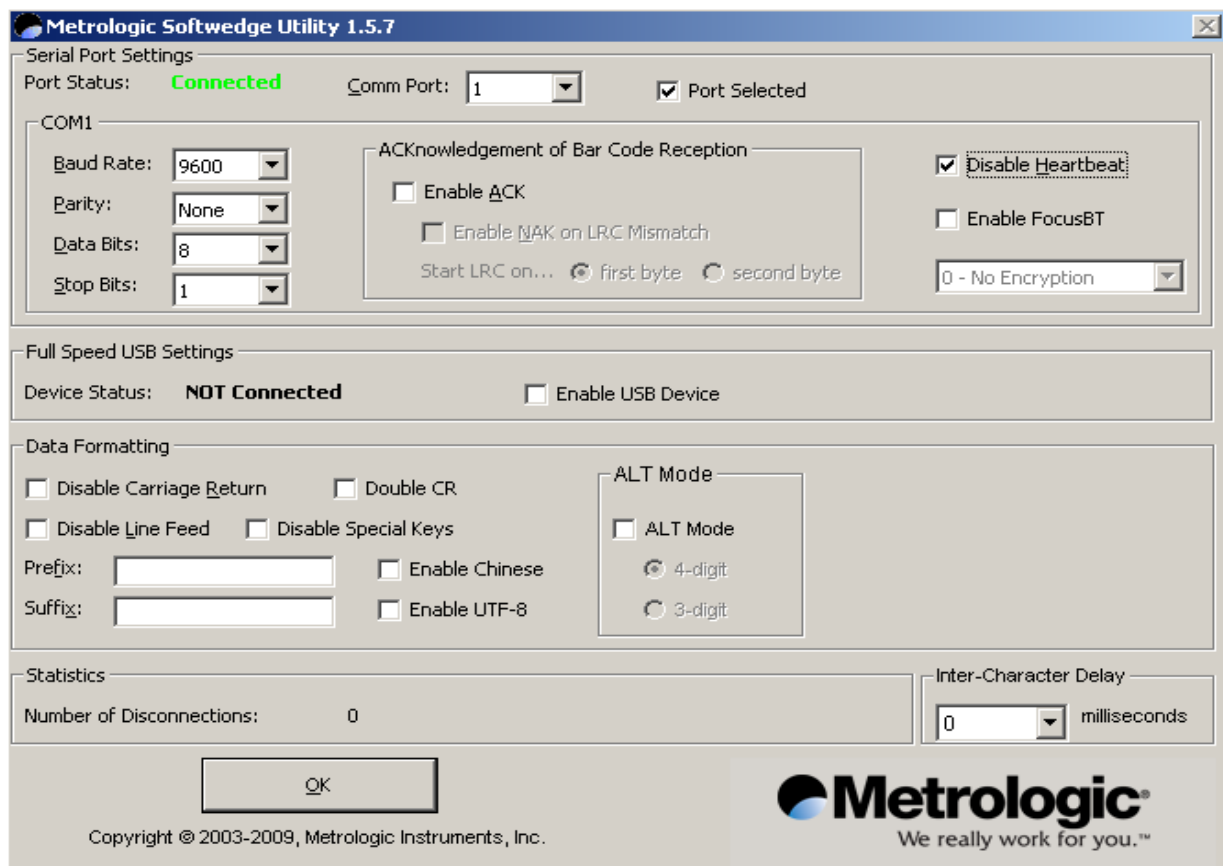
The Port Status switches from Not Connected



to Connected

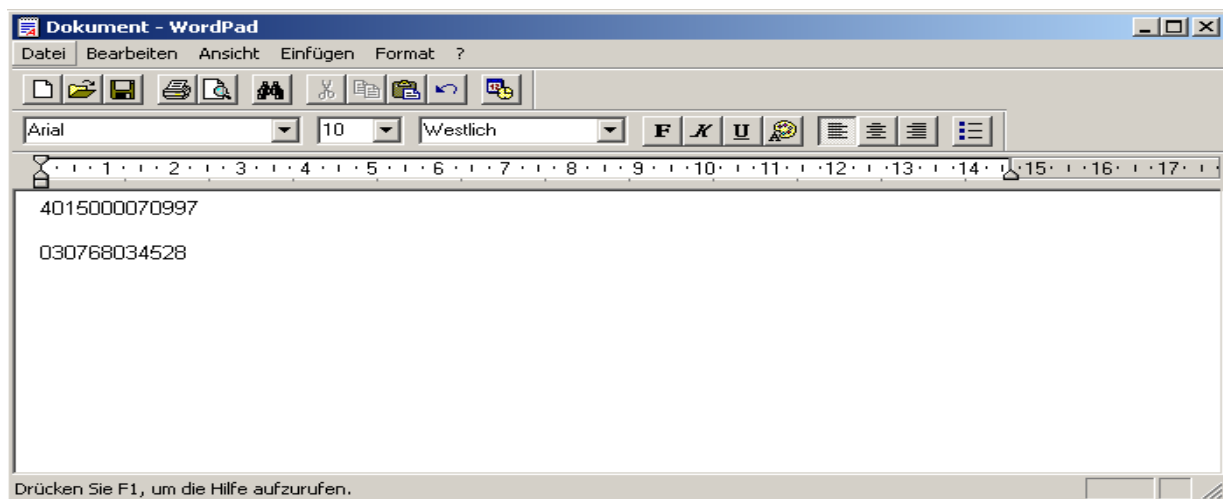


If necessary do the other settings, in most of the cases the standard settings are applicable.



Exit the Softwedge Manager with OK-

Open Notepad to test:



If data appears in notepad, the scanner has successfully installed and configured SoftWedge to work with the host system. The scanner should now work with the application software it will be used with.